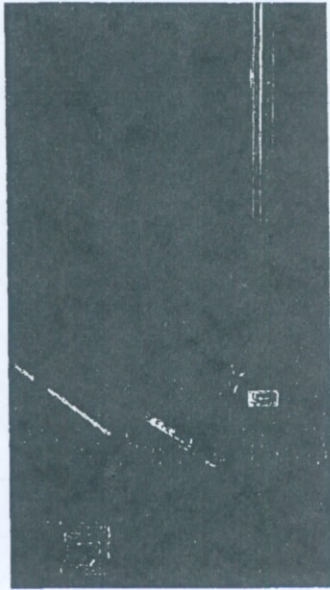


...last year we had more  
al children but fewer adults,  
of and it is hoped that, by  
ie expanding our festivities

## ...s to Kiwanis

er  
to  
se  
ie  
ir



WATT

ib  
id  
e.  
v-  
e.  
at  
a-

a  
or  
s.  
ie

Facebook. Members of the community who are interested in the club's activities are invited to request to be members. It is an open group page so any Facebook members may view the page. The Facebook page is at <http://www.facebook.com>

...ive organization or as a  
Volunteer at these events  
and others can be found at  
[www.emanuelarts.org](http://www.emanuelarts.org) or on

music and entertainment  
at the Pavilion immediately  
afterward).

## Letter to the Editor

Dear Editor,

I want to share a good story with you.

On July 19, I lost my purse. Before leaving my home, I had letters to mail. I set my purse on the back of the car, mailed the letters, and got into the car, forgetting that I had left my purse sitting on the car.

When I reached my destination, I reached for my pocket book, but it wasn't there. I immediately remembered where I had left it.

My heart sank. I didn't think I would ever see it again. I didn't even get out of the car. I turned around and went back, retracing my route down highway 80 and into my driveway. A white truck pulled in behind me.

The man got out and handed me my pocket book. He told me he found it on Highway 80 and a car ran over it right ahead of him and scattered everything in it. He got out and picked it all up, saw my address and brought it to me.

I didn't miss anything: Social Security card, Medicare, driver's license, military Tri-Care, pacemaker card, several doctors' appointments, some small cash... My cell phone was damaged.

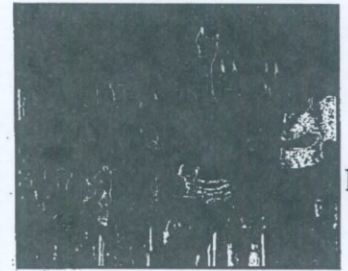
There are good, honest people in this world. This is one of them. He will never know how much this meant to me and how much I thank him. He is with a work group from Augusta.

Thank you again!

## PRESENT EVERYBODY DA LIVE PERFORM

Swainsboro City A  
July 29th at 7e

Tickets: \$5 in Ad  
(Available at Emanuel A  
\$7 at the Doc



Tu

For

(

For more information about t  
call, email, or find us c



*Committed  
to Caring*

Through our  
"Commitment to Caring,"  
we are pleased and  
fortunate to provide a  
spectrum of health care services  
to the people in our communities